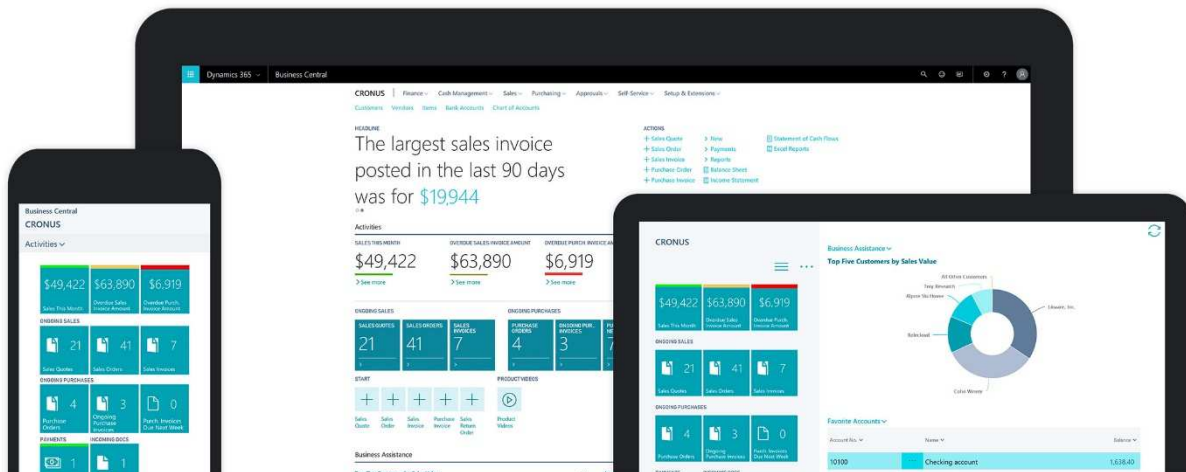


Microsoft Dynamics 365 Business Central

Licensing Guide - Simplified



May 2018

Source: <https://mbs.microsoft.com/Files/public/365/Dynamics365BusinessCentralLicensingGuide.pdf>

Created by: ABC E BUSINESS www.abcebusiness.nl

Using this guide

This guide is designed to improve your understanding of how to license Microsoft Dynamics 365 Business Central. This document does not apply to Microsoft Dynamics 365, Microsoft Dynamics 365 on-premises, Microsoft Dynamics 365 for Operations on-premises, Microsoft Dynamics NAV, Microsoft Dynamics GP, Microsoft Dynamics SL, Microsoft Dynamics AX 2012 or prior versions, or Microsoft Dynamics CRM 2016 or prior versions. This guide is not intended to influence the choice of Microsoft Dynamics products and services or provide technical specification. The examples presented in this guide are illustrative. Microsoft reserves the right to review or update this document at any time without notice. For help determining the right technology solution for any given organization, including the license requirements for a specific product or scenario, consult with your Microsoft account team or ABC E BUSINESS. This guide does not supersede or replace any of the legal documentation covering use rights.

Dynamics 365 Business Central

General overview

Subscriptions are named user subscriptions where a user is licensed for Dynamics 365 Business Central Essentials or Dynamics 365 Business Central Premium.

The following application is part of Dynamics 365 Business Central: PowerApps for Dynamics 365. Business Central Application Dynamics 365 Business Central is a comprehensive business management solution for SMBs.

The Dynamics 365 Business Central application can be licensed two ways:

Dynamics 365 Business Central **Essentials**:

- Financial Management
- Customer Relationship Management
- Project Management
- Supply Chain Management
- Human Resources Management
- Warehouse Management

Dynamics 365 Business Central **Premium**:

- Everything in Essentials
- Service Management
- Manufacturing

International Availability

Dynamics 365 Business Central is available in United States, Canada, United Kingdom, Denmark, Netherlands, Germany, Spain, Italy, France, Austria, Switzerland, Belgium, Sweden, and Finland (April 2018).

Microsoft Dynamics 365 Subscription License Types

Microsoft Dynamics 365 simplifies licensing of business applications. The primary licensing is by named user subscription. The Microsoft Dynamics 365 user subscriptions classify users into two types, “full users” and “additional users”. Full users are the users whose work requires use of the feature rich business applications functionality. Examples of full users are sales people, customer service representatives, finance employees, controllers and supply chain managers. These users have also been referred to in the past as Pro users or Power Users. These full users are licensed with a Dynamics 365 Business Central subscription. Additional users often represent a significant percentage of users in an organization and may consume data or reports from line of business systems, complete light tasks like time or expense entry and HR record updates or be heavier users of the system, but not require full user capabilities. These additional users are licensed with Dynamics 365 Business Central Team Members.



Default subscription capabilities

Production Instance	1 Included
Non-Production Instance	None
File Storage	Unlimited
Database Storage	Unlimited
External Accountant Licenses	1 Included
Companies	Unlimited
Cortana Intelligence	1800 seconds per month/tenant

Pricing

Default pricing

The following default pricing applies (April 2018).

Team Member	Essentials	Premium
\$ 8	\$ 70	\$ 100
€ 7	€ 59	€ 85

Industry specific pricing - Essentials

Based on the Essentials license, ABC E BUSINESS has the following industry specific pricing.

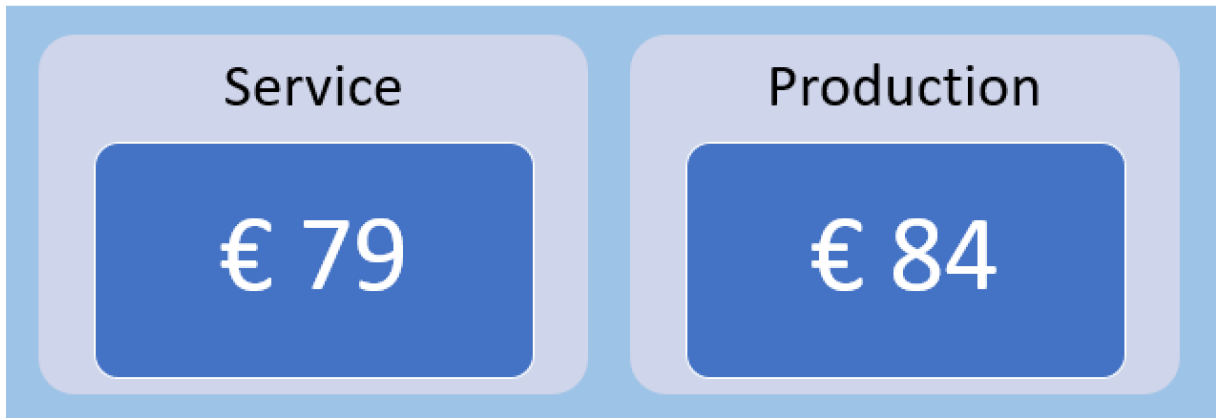
Note that most of the industry specific prices based on the Premium license are lower than the default pricing.

Starter	Projects	Trade	Assembly	Trade Pro
€ 49	€ 54	€ 55	€ 56	€ 60

Industry specific pricing - Premium

Based on the Premium license, ABC E BUSINESS has the following industry specific pricing.

Note that all of the industry specific prices based on the Premium license are lower than the default pricing.



More information about pricing and possibilities: <https://www.abcebusiness.nl/prijzen/>

ABC E BUSINESS www.abcebusiness.nl

+31-40-3032320

info@abcebusiness.nl